

## Digestive System

Esophagus

Rectum

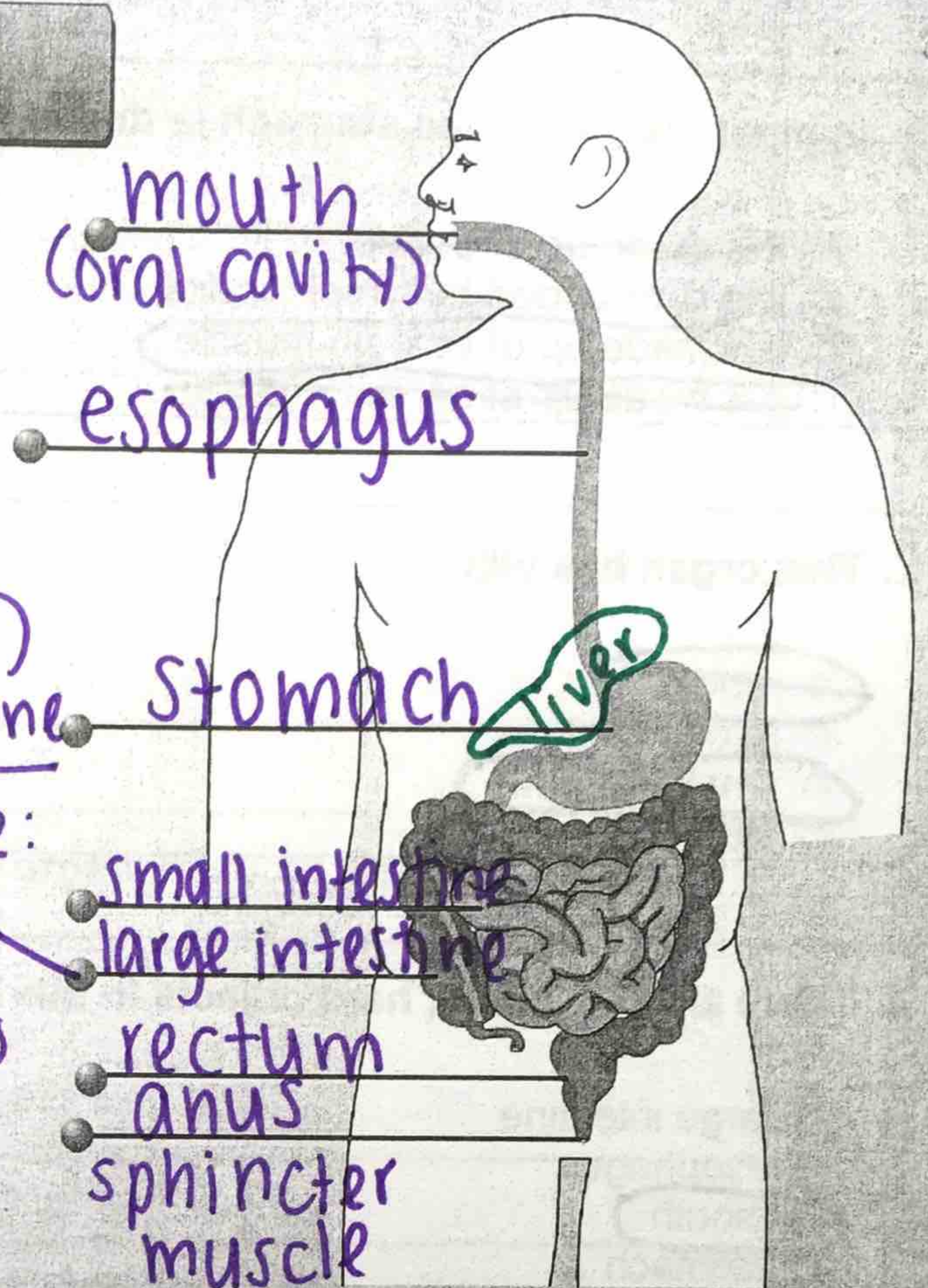
Stomach

Large Intestine

Small Intestine

Mouth

Anus



- ① mouth: teeth/tongue
  - saliva - enzymes begin to break down the food
- ② esophagus: long tube of muscle transports food to stomach
- ③ stomach: stores food (4-5 hours) & breaks down protein
- ④ small intestine: 1st part works w/ juices from liver & pancreas to continue to break down food
  - 2nd part → the food gets absorbed from the intestine & into our body through the blood